

## History and Milestones

**1920** William David Sansum, M.D. accepts offer to become the new director of the Potter Metabolic Clinic in Santa Barbara.

**1922** Following the discovery of insulin, Dr. Sansum produces insulin from animal pancreases and is one of the first physicians in the United States to administer insulin to patients.

**1931** Sansum Clinic (formerly Potter Metabolic Clinic) opens.

**1935** Fritz Bischoff, Ph.D. discovers the first long-acting insulin.

**1944** Sansum Clinic Research Foundation established as a nonprofit research organization.

**1948** Dr. Sansum dies from a stroke at age 67.

**1959** Casimir Domz, M.D., Director of Laboratories, performs first successful transplantation of bone marrow on a 55 year old woman.

**1966** Sansum Medical Research Foundation dedicates phase I of its own building. This project was made possible by a gift from longtime Sansum Clinic patients Mr. & Mrs. Harry Morrison of Boise, Idaho.

**1985** Glycosylated proteins are shown to be clinically important to assess glucose control.

**1996** Lois Jovanovic, M.D. appointed Director of the Institute. Launches Santa Barbara Diabetes Project, an international collaborative of researchers dedicated to the cure of type 1 diabetes.

**2003** Name changed to current Sansum Diabetes Research Institute. Prior to this time the Institute was named Sansum Medical Research Foundation and the Sansum Medical Research Institute.

**2004** The Santa Barbara Diabetes Initiative begins. This collaborative diabetes education and outreach program serves Santa Barbara's medically underserved community with and at-risk for diabetes.

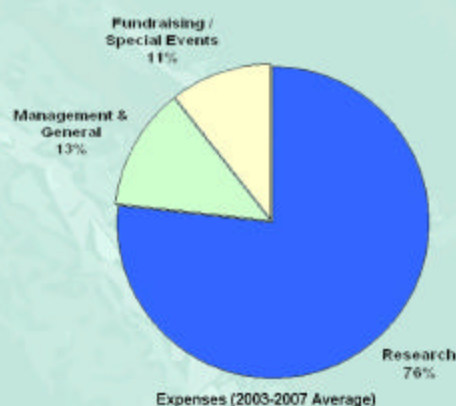
**2006** SDRI renews the 1998 collaborative research agreement with the University of California, Santa Barbara. SDRI becomes one of six sites worldwide funded by the Juvenile Diabetes Research Foundation to collaborate on an Artificial Pancreas Project. Also, the new state-of-the-art Diabetes Research & Care Center opens on the Institute's second floor, culminating a \$3 Million capital campaign project.

**2008** Expanded funding achieved with grants in the fields of artificial pancreas and pregnancy.

## Fiscal Information



We undertake our stewardship seriously. Charity Navigator, the leading charity evaluator in America, has consecutively awarded SDRI its highest 4-star rating for our ability to efficiently manage and grow our finances. According to this watchdog organization, SDRI "outperforms most charities in America in their efforts to operate in the most fiscally responsible way possible."



## Research and Education

SDRI staff members work with international collaborators to make better adjustments in insulin delivery for glucose control. SDRI CEO Lois Jovanovic, M.D. and senior scientists travel the globe to enlighten others regarding the most current research in the field of diabetes and to accept awards that recognize them for their significant impact upon the understanding of diabetes.

SDRI staff members develop and facilitate family-based, culturally-specific workshops that emphasize the roles nutrition and lifestyle play in the prevention and treatment of pre-diabetes and type 2 diabetes. Free nutrition classes are held at the Community Education Center at SDRI. Also, a schedule of local diabetes classes is updated monthly at [www.sansum.org](http://www.sansum.org).

Additional community outreach includes establishing advocacy programs aimed at reducing obesity and sharing expertise with practicing physicians at an annual Diabetes Academy.

SDRI and the University of California, Santa Barbara are collaborating on an Artificial Pancreas Project. SDRI publishes a bi-annual Quest Newsletter updating current research projects.

To provide a comprehensive learning experience for those interested in a biological science or medical career, SDRI offers a ten-week internship program every summer. Interns learn about diabetes and are involved in a wide variety of research and medically oriented activities.



## Global Overview

Sansum Diabetes Research Institute is a research center devoted to the prevention, treatment and cure of diabetes. The organization's founder, William D. Sansum, M.D., brought renown to Santa Barbara in 1922 as the first physician in the U.S. to produce and administer life-saving insulin to patients with diabetes.



Today, under the leadership of Lois Jovanovic, M.D., Sansum Diabetes Research Institute remains an extraordinary place,



where diabetes research, nutrition, education, and diabetes prevention have improved the lives of people worldwide who suffer from this serious disease. The Institute has gained international recognition for work

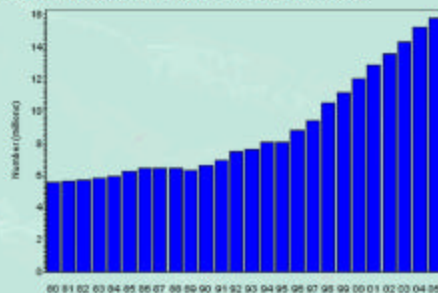
on methods to detect and chart the progress of diabetes, its success in developing protocols to increase the prevalence of healthy babies born to women with diabetes, and its work on type 2 diabetes in young people. Physicians and researchers continue to develop new treatment protocols for people with diabetes. New drugs and medical devices are clinically tested to ensure their efficacy and safety.

It is our intention to use our past and present accomplishments to guide us into the future – to tap into the energy and commitment that made Sansum Diabetes Research Institute what it is today – a worldwide leader in diabetes research, prevention, and treatment.

## How You Can Help

Sansum Diabetes Research Institute (SDRI) is a charitable nonprofit organization that relies on support from the community, patients, and foundations. Donations fund programs that allow us to provide improved patient care, prevention, community education, and clinical and biomedical research to those affected by the current epidemic in diabetes.

According to the Centers for Disease Control (CDC), from 1980 through 2005 the number of Americans with diabetes increased from 5.6 million to 15.8 million. **And in the last 18 months there has been an increase of more than 3 million; diabetes now affects nearly 24 million people in the United States. Another 57 million people are estimated to have pre-diabetes, a condition that puts people at increased risk for diabetes.**



Year  
Number (in Millions) of Persons with Diagnosed Diabetes, United States, 1980–2005

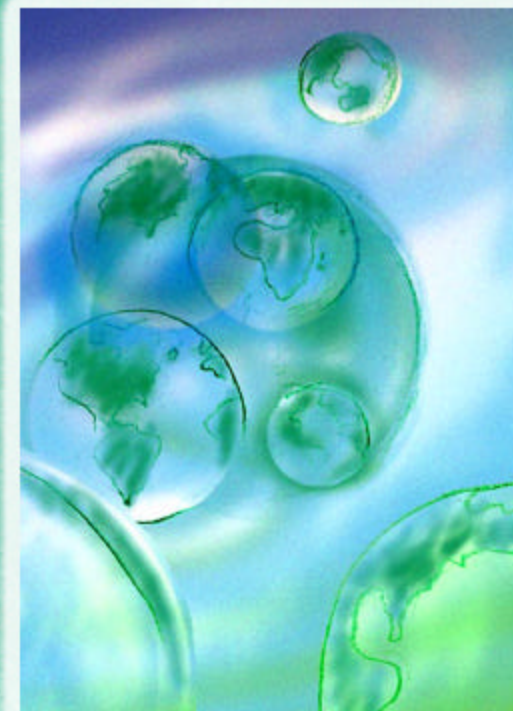
Sansum Diabetes Research Institute welcomes charitable annuities, bequests, and trusts that allow you to impact the future of diabetes care and pass on a legacy to future generations. To find out about special financial tools you can use to plan your gift to us that will also return benefits to you, e-mail [plannedgiving@sansum.org](mailto:plannedgiving@sansum.org).

Sansum Diabetes Research Institute  
2219 Bath St., Santa Barbara, CA 93105  
805.682.7638 Fax 805.682.3332

Visit: [www.sansum.org](http://www.sansum.org) E-mail: [development@sansum.org](mailto:development@sansum.org)

Fed Tax ID# 95-1684086

## Seeking a cure...



## Helping the world



**Sansum Diabetes  
Research Institute**

*A research center devoted  
to the prevention, treatment,  
and cure of diabetes*